

# How To Extend Your Study Permit



## OVERVIEW

### When To Apply

At least 30 days up to 120 days before your study permit expires

### How To Apply

Online (recommended) or by paper

### Processing Time

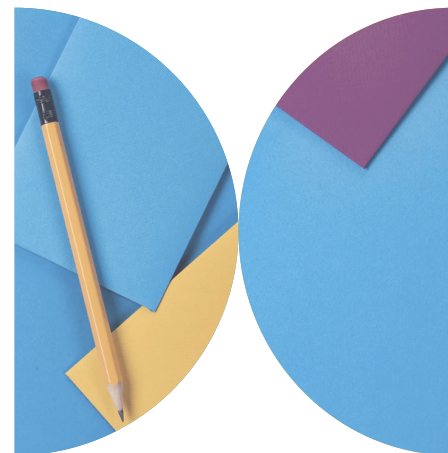
Check this website for weekly updates:

<https://www.canada.ca/en/immigration-refugees-citizenship/services/application/check-processingtimes.html>

### Cost

Government Application Fee: CAD \$150

Biometrics (if applicable): CAD \$85



## CREATE YOUR DOCUMENT CHECKLIST.

### 1. Create A MYCIC Account Here:

<https://www.canada.ca/en/immigration-refugees-citizenship/services/application/account.html>

### 2. Complete The Online Questionnaire

This will generate a personalized checklist for your study permit extension.



## GATHER YOUR DOCUMENTS.

TIP: Click the small blue icon (?) in your checklist to see specific instructions.

### 1. Fill Out the Application Form

Note: Columbia College's Designated Learning Institution (DLI) Number is: 019279591302

### 2. Letter Of Acceptance

Note: This is not your original admission offer letter.

Fill up our online form located at:

Columbia College website > Current Students > Immigration > Canadian Study Permits & Visas > Study Permit Extension > Online Form for letter requests.



### 3 . Passport

### 4 . Digital Photo

Click on the small blue icon (?) beside it to see the dimensions.

### 5 . Proof Of Means Of Financial Support

Click on the small blue icon (?) beside it to see what documents you can include.

### 6 . Other Optional Documents



## SUBMIT YOUR APPLICATION

1 . Ensure All Your Documents Are Complete.

2. Pay The Fee Online.

### IMPLIED STATUS

If you submit your study permit extension application before your study permit expires, you may continue studying (and working, if eligible), as long as you meet the conditions of your study permit while you remain in Canada. However, if you left Canada while your application is in process, you may re-enter Canada (if you have a valid TRV or eTA) but cannot resume study and work until your application for extension is granted.



## AFTER YOU GET YOUR NEW STUDY PERMIT

Submit a copy of your renewed Study Permit to Student Services office

Extend your Medical Services Plan (MSP), if applicable

Extend your Social Insurance Number ( SIN ), if applicable

Renew your eTA or TRV, if planning to travel outside of Canada (See reverse page for instructions)

Need Help? Email [ssa@columbiacollege.ca](mailto:ssa@columbiacollege.ca) using your Columbia College email account.



Columbia College  
Established 1936